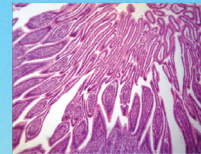




LABOMED, INC.



LB-124 Monocular Biological Microscope

With precision machining equipment and advanced alignment technology, **LB-124 Monocular Biological Microscope** is a classical biological microscope. This microscope is widely used in educational, academic, agricultural and study field. With a microscope adapter, a digital camera (or digital eyepiece) can be plug in to the trinocular tube or the eyepiece tube. Rechargeable battery(only for LED illumination) is optional for outdoors operation or places that power supply is not stable.

APPLICATION

LB-124 Monocular Biological Microscope is an ideal instrument in biological, histological, pathological field and can be widely used in medical and sanitary establishments, laboratories, institutes, academic laboratories, colleges and universities.



LABOMED, INC.

FEATURES

1. New machining facility and advanced alignment technology.
2. Comfortable operation with updated and ergonomic design;
3. Compact and flexible, ideally suited for desktop, laboratory worktable;
4. Interpupillary distance can be adjusted to fit for observation;
5. Support Windows Vista / Win 7 / Win8 / Win 10 / Mac Operation System. The software can preview, take photos and video, do image processing and measurement;
6. Support Multi-language (Arabic, Chinese, English, French, German, Japanese, Polish etc.).

SPECIFICATION

Model	LB-124
Viewing Head	Monocular Head Inclined at 45°, 360° Rotatable
Eyepiece	Wide Field Eyepiece WF10×/ 18mm
Nosepiece	Quadruple Nosepiece
Objective	Achromatic Objective 4×, 10×, 40×, 100×
Total magnifications	With 10x eyepiece: 40×, 100×, 400×, 1000×
Stage	Double Layer Mechanical Stage 140×140mm/ 75×50mm
Focus	Coaxial Coarse & Fine Adjustment, Fine Division 0.002mm, Coarse Stroke 37.7mm per Rotation, Fine Stroke 0.2mm per Rotation, Moving Range 28mm
Condenser	Abbe NA 1.25 with Iris Diaphragm & Filter
Illumination	1W S-LED Illumination, Brightness Adjustable Plan-concave Mirror
Body / Energy	Firm Aluminum Body and built in power supply
Supplied with	Dust cover, immersion oil and user manual
Package	1pc/carton, 33cm×28cm×44cm×, 7kg





LABOMED, INC.

SAMPLE IMAGES

