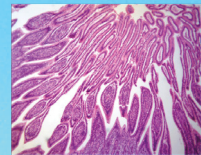




# LABOMED, INC.



## **LB-1270 Compound Biological Trinocular Digital Microscope with Camera and Software (5.0MP), LCD and Infinite Optical System**

**The LB-1270 Compound Biological Trinocular Digital Microscope with Camera and Software (5.0MP), LCD and Infinite Optical System** are high level microscope which are specially designed for college education, medical and laboratory study. It adopts an Infinite optical system, beautiful structure and ergonomic design. With an innovative optical and structure design idea, excellent optical performance and easy to operate system, this biological microscope makes your works enjoyable.

The LB-1270 employs the 11.6" retina HD LCD screen to see large images of your specimens. It also provides an option to connect it to your large monitor using an HDMI connection.



# LABOMED, INC.

## FEATURES

- Excellent optical system, outstanding image quality with high resolution and definition.
- Comfortable operating with ergonomic design.
- Unique aspheric illumination system, provide bright and comfortable lighting.
- Various colorful matching looking can provide lively environment and happy mood.
- Various accessories for upgrading.
- Back handle and observing hole convenient for carry and operation



## APPLICATION

**The LB-1270 Compound Biological Trinocular Digital Microscope with Camera and Software (5.0MP), LCD and Infinite Optical System** is an ideal instrument for the biological, histological, pathological, bacteriology, immunization, and pharmacy fields, and can be widely used in medical and sanitary establishments, laboratories, institutes, academic laboratories, colleges and universities.

## SPECIFICATION

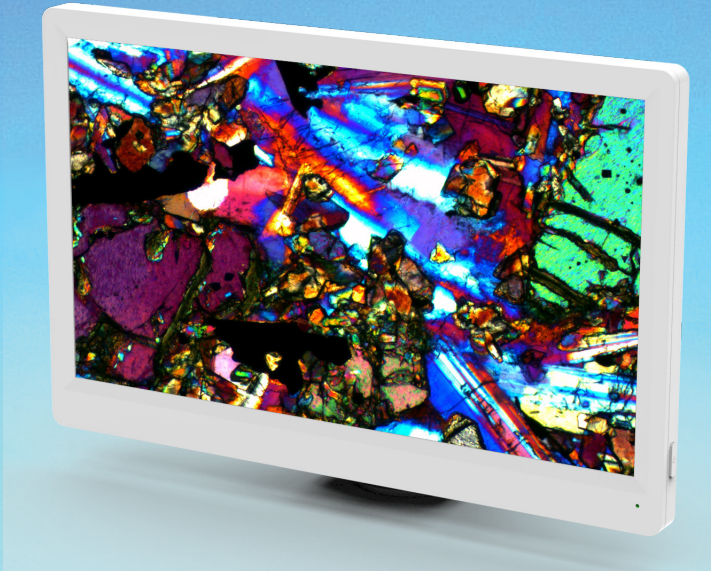
Model	LB-1270
Optical System	Infinite Optical System
Viewing Head	Seidentopf Trinocular Viewing Head, Inclined at 30°, 360° Rotatable, Interpupillary 48-75mm, Light Distribution: 20:80 (eyepiece: trinocular tube)
Eyepiece	WF10×/20mm
Infinite Achromatic Objective	E-Plan 4×, 10×, 40× (S), 100× (Oil) (S)
Nosepiece	Backward Quadruple Nosepiece
Focusing	Coaxial Coarse & Fine Focusing knobs, Travel Range: 26mm, Scale:2um
Stage	Double Layers Mechanical Stage, Size: 145×140mm, Cross Travel 76×52mm, Scale 0.1mm, Two Slide Holder



# LABOMED, INC.

Condenser  
Illumination

Abbe Condenser NA1.25 with Iris Diaphragm  
3W LED Illumination Systems, Brightness Adjustable



## HD LCD AND DIGITAL CAMERA

**The HD LCD and Digital Camera for LB-1270** is a brand new high performance and highly cost-effective, super reliable HD LCD camera which combines an full HD camera and a retina HD LCD screen. With the built-in software, the **HD LCD Digital Camera for LB-1270** can be controlled by a mouse to take pictures, take videos and save to SD card.



# LABOMED, INC.

## **FEATURES of HD LCD and Digital Camera for LB-1270**

1. Control camera with mouse from USB port, no shaking.
2. 11.6" retina HD LCD Screen, high definition and high quality color reproduction.
3. 5.0MP still image capture and 1080P Video Recording.
4. Save image and video to SD card.
5. Also can be connected to PC and take picture, take video, do measurement and analyze images.
6. Standard C-mount Interface for different microscopes.

## **APPLICATION of HD LCD and Digital Camera for LB-1270**

**HD LCD and Digital Camera for LB-1270** is specifically developed for different microscopy applications. It can be widely used in medical diagnosis, industrial production and inspection, laboratory research and related microscopy field for image, video capture and analysis. It is mainly used for following areas:

- Biological Teaching Digital Imaging
- Live Cell Imaging
- Surgical Microscopic Imaging
- Pathology
- Cytology
- Defect Analysis
- Semiconductor Inspection
- Navigation for Processed Imaging
- Industrial Optical HD Digital Imaging
- Astronomical Observation



# LABOMED, INC.

## SPECIFICATION for HDMI Camera

Image Sensor	CMOS, Aptina MT9P031
Sensor Size	1/2.5"
Video Resolution	1920 × 1080
Image Resolution	2592 × 1944
Frame Rate	1920 × 1080 15fps via USB2.0 1920 × 1080 15fps via HDMI
Data Record	SD Card (4G)
Video Record	1080p 15fps @ SD Card 1080p 15fps @ PC
Scan Mode	Progressive
Electronic Shutter	Electronic Rolling Shutter
A/D conversion	8 bit
Color Depth	24bit
Sensitivity	510mV
Dynamic Range	60dB
S/N ratio	40.5dB
Exposure time	0.001 sec ~ 10.0 sec
Exposure	Auto/Manual
White balance	Auto
Settings	Gain, Gamma, Saturation, Contrast
Built- in software	Cloud 1.0 version
PC software	ISCapture
Output model 1	USB2.0
Output model 2	HDMI
System Compatible	Windows XP/Vista/Win 7/Win 8(32 and 64-bit ), MAC OSX
Optical port	C- Mount
Power Supply	DC 12V /2A
Operational Temperature	0-60°C
Humidity	45%-85%
Storage Temperature	-20-70°C



# LABOMED, INC.

## SPECIFICATION for Retina Screen

Screen Size	11.6 inch
Aspect Ratio	16:9
Display Resolution	1920 × 1080
Display Type	IPS-PRO
Brightness	320cd/m <sup>2</sup>
Static Contrast Ratio	1000:1
Input	1*HDMI PORT
Power Supply	DC 12V /2A External Adapter
Dimension	282mm×180.5mm×15.3mm
Net Weight	600g

## SAMPLE IMAGES

