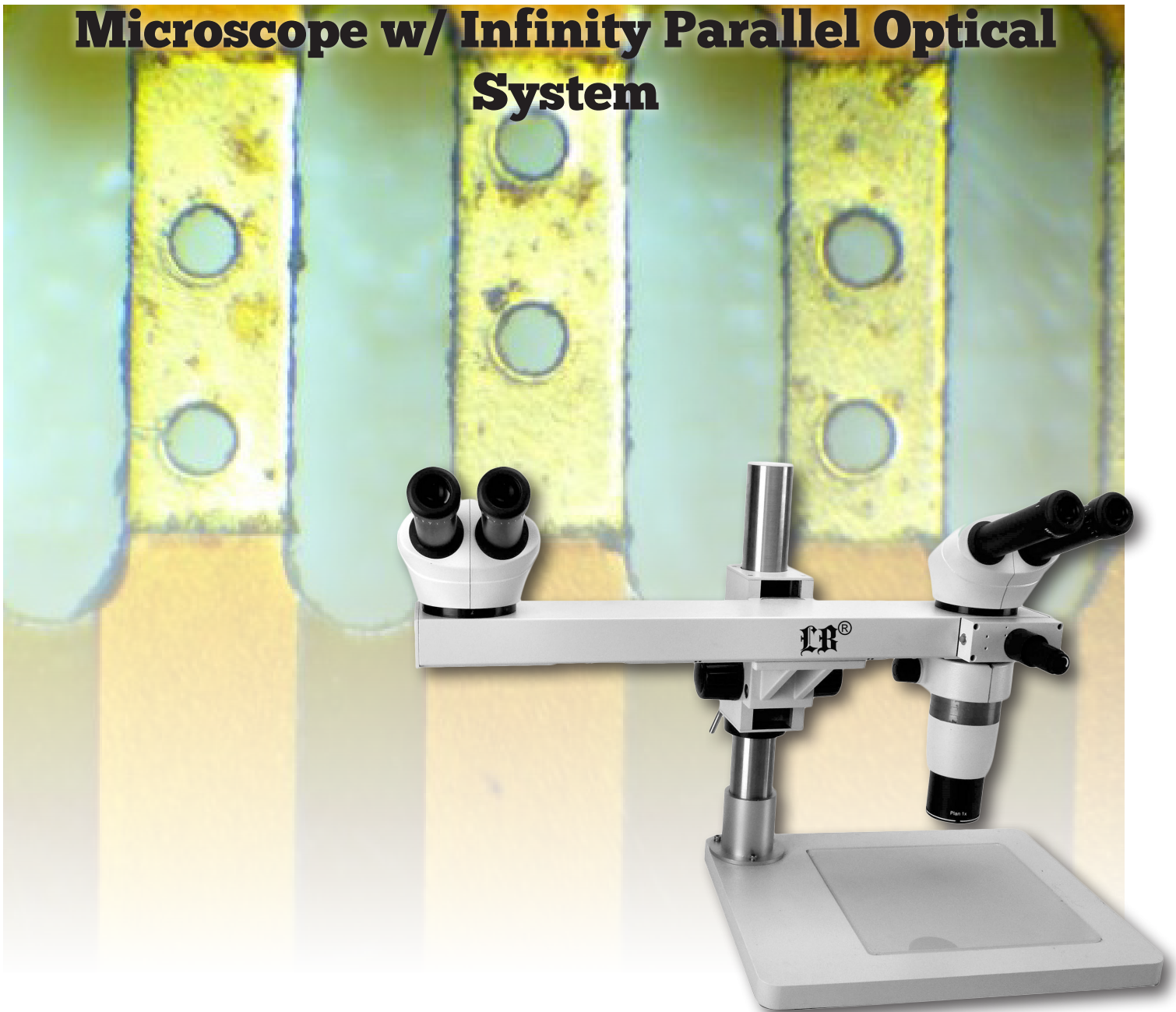




LB-373

**Dual Viewing Head Zoom Stereo Teaching
Microscope w/ Infinity Parallel Optical
System**



LB-373 Dual Viewing Head Zoom Stereo Teaching Microscope w/ Infinity Parallel Optical System

LB-373 Dual Viewing Head Zoom Stereo Teaching Microscope w/ Infinity Parallel Optical System on a heavy stand offers upright, un-reversed 3D images that remain in focus throughout the zoom range. Optional eyepieces and auxiliary objectives are available to expand magnification range and working distances.

Optional cold light and ring light are available for this microscope. You can also choose beam splitter to add digital camera with the appropriate camera adapter. **LB-373 Dual Viewing Head Zoom Stereo Teaching Microscope w/ Infinity Parallel Optical System** give the greatest range of magnifications, working distances, photo options, various accessories and are the most convenient to use.

It is an outstanding assistant in Industrial, Medical and Scientific Research areas.

APPLICATION

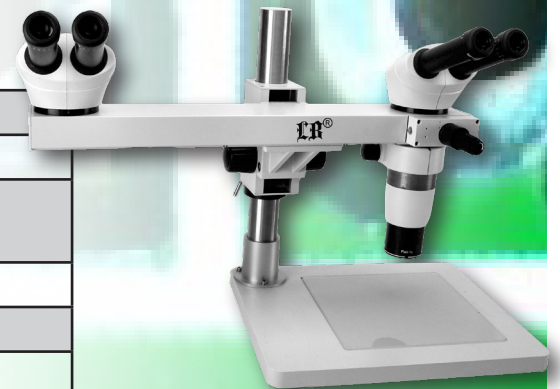
LB-373 Dual Viewing Head Zoom Stereo Teaching Microscope w/ Infinity Parallel Optical System are of great value in a variety of applications such as Industrial, Medical and Scientific Research areas, especially surgical practice of dental, Neurological, orthopedics and ophthalmological, etc. These microscopes also can be used in teaching of very precise and delicate operation under microscopes, like watch assemble.

FEATURES

1. Excellent Image Quality & Optical Performance with Infinity Galilean Parallel Optical System.
2. Comfortable Operation with Ergonomic Design Principle.
3. Can apply for double people observations of the same specimen simultaneously, eliminate the defects of digital teaching.
4. The built-in dual color(red and green) pointer can be switched as request, convenient for teaching.

SPECIFICATION

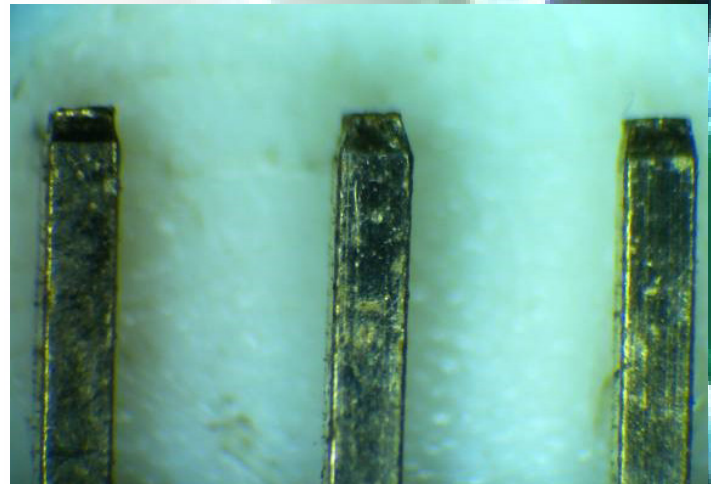
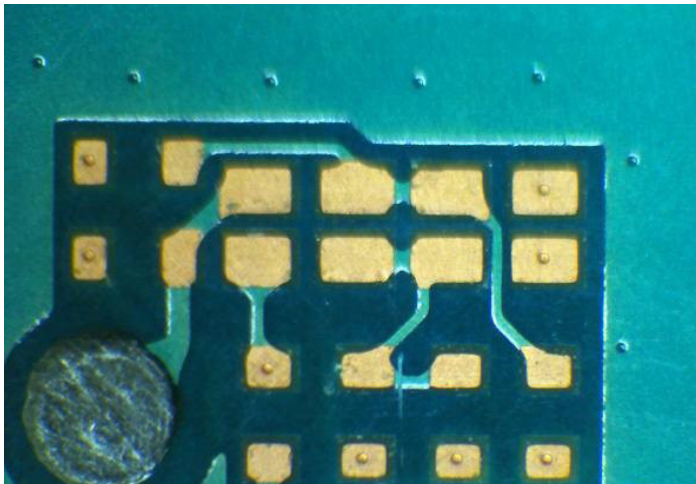
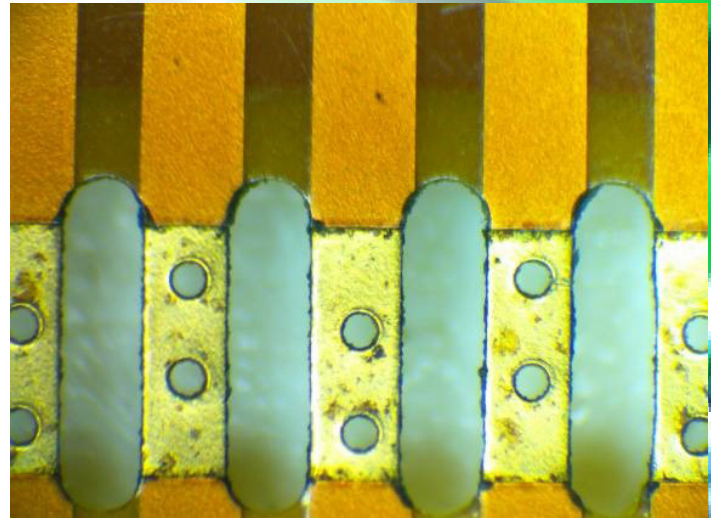
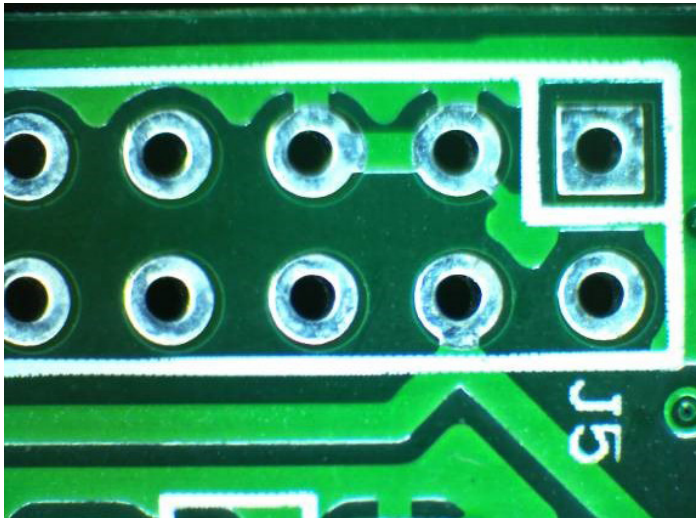
Item	Specification
Optical System	Infinite Parallel Zoom Optical System
Viewing Head	Binocular Head, 20°Inclination, Interpupillary Distance 55-75mm
Eyepiece	EW10×/Φ22mm
Pointer	Red and Green LED pointer
Zoom Objective	0.8×-6.4×
Objective	Plan Achromatic Objective 1×, W.D.: 78mm
Zoom Ratio	01:08
Focusing Unit	Coarse Focus Knob with tension adjustable, Moving range 215mm



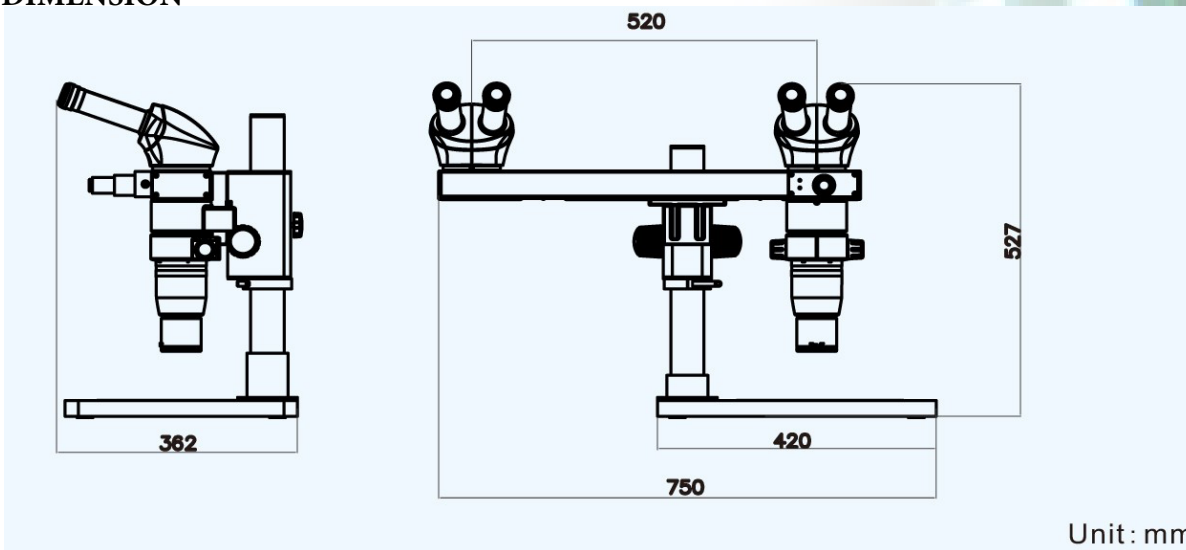


Illumination	Right light(LED/fluorescent)
Base Size	420x350mm
Toughened Glass Stage	250x250mm

SAMPLE IMAGES



DIMENSION



Unit : mm