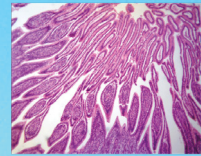




LABOMED, INC.



LC-2 USB3.0 Eyepiece Camera

LC-2 USB3.0 Eyepiece Camera is an economic version with simple and compact structure USB3.0 CMOS eyepiece camera. USB3.0 is used as the data transfer interface. Microscope eyepiece camera with 23.2 diameter and compact size;

The LC-2 USB3.0 Eyepiece Camera comes with high-speed USB3.0 interface and high frame rate video display keep the screen smooth without interruption; Also the **LC-2 USB3.0 Eyepiece Camera** comes with advanced video & image processing application ImageView.



LABOMED, INC.

LC-2 USB3.0 Eyepiece Camera

APPLICATION

The **LC-2 USB3.0 Eyepiece Camera** can be widely used to transfer the mono or binocular student microscopes to digital microscope.

With 23.2 to 30mm or 23.2 to 30.75 convert ring, the **LC-2 USB3.0 Eyepiece Camera** camera can also change the stereo microscope to digital stereo microscope



FEATURES

1. Microscope eyepiece camera with 23.2 diameter and compact size;
2. Easy to extend to C or CS- Mount camera with high quality lens(optional);
3. High-quality camera with Aptina CMOS sensor;
4. Auto white balance and auto-exposure; Brightness, contrast, chroma, and saturation can be adjusted;
5. High-speed USB3.0 interface and high frame rate video display keep the screen smooth without interruption;
6. With advanced video & image processing application ImageView;
7. Providing Windows/Linux/Mac OS multiple platforms SDK;
8. Native C/C++ , C#/VB.NET, DirectShow, Twain Control API.





LABOMED, INC.

SPECIFICATION

Model	LC-2
Sensor & Size	5.0M/MT9P001(Color) 1/2.5"(5.70x4.28)
Pixel(μm)	2.2x2.2
G Responsivity	0.53 V/lux-sec
Dynamic range	66.5dB
SNR _{max}	40.5dB
FPS/Resolution	15@2560x1920 15@2048x1536 30@1920x1080
Binning	1x1, 2x2
Exposure	Auto
Spectral Range	380-650nm (with IR-cut Filter)
White Balance	Auto White Balance
Color Technique	N/A
Capture/Control API	Native C/C++, C#/VB.NET, DirectShow, Twain and Labview
Recording System	Still Picture and Movie
Cooling System*	Natural
Operating Environment	
Operating Temperature (in Centidegree)	-10~ 50
Storage Temperature(in Centidegree)	-20~ 60
Operating Humidity	30~80%RH
Storage Humidity	10~60%RH
Power Supply	DC 5V over PC USB3.0 Port
Software Environment	
Operating System	Microsoft® Windows® XP / Vista / 7 / 8 /10 (32 & 64 bit) OSx(Mac OS X) Linux
PC Requirements	CPU: Equal to Intel Core2 2.8GHz or Higher Memory: 2GB or More



LABOMED, INC.

USB Port: USB3.0 High-speed Port
Display: 17" or Larger
CD-ROM

DIMENSIONS

The **LC-2 USB3.0 Eyepiece Camera** body, made from aluminum alloy blackening, ocular housing: Dia.32 X 56mm ensures a heavy duty, workhorse solution. The camera is designed with a high quality IR-CUT filter to filter the infrared light and protect the camera sensor. No moving parts included. This design ensures a rugged, robust solution with an increased lifespan when compared to other industrial camera solutions.

