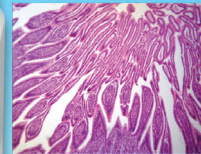




LABOMED, INC.



LC-20 USB3.0 Colorful CMOS Digital Camera(16MP)

LC-20 USB3.0 Colorful CMOS Digital Camera(16MP) adopt the latest USB3.0 technology, the speed is much faster than USB2.0 digital cameras.

LC-20 USB3.0 Colorful CMOS Digital Camera(16MP)

APPLICATION

LC-20 USB3.0 Colorful CMOS Digital Camera(16MP) is widely used in academic and medical fields for precision and high resolution microscope image capturing and processing.



LABOMED, INC.

FEATURES

- The cameras have a high-resolution sensor and excellent color reproduction ability;
- With USB3.0 interface, the cameras have high-speed data transmission;
- User-friendly image processing software with measurement function;
- Compatible with Windows 2000/ XP/ Vista/ Win7/Win 8/Win 10, 32bit&64bit, Mac/Linux operation system;
- 45X adapters and micrometers are optional.



SPECIFICATION

| | |
|----------------------------|---|
| Model | LC-20 |
| Sensor | Panasonic MN34120 |
| Color/Monochrome | Color |
| Sensor Size | 1/2.33 inch |
| Image Processor | Built-in image processor |
| Image Transmission Control | High-speed FPGA+high speed DDR |
| Color Temperature | 1900K-8000K |
| Pixel Size | 1.335 μ m \times 1.335 μ m |
| Effective Pixels | 16.0MP |
| Max. Resolution | 4608H \times 3456V |
| Scan Mode | Progressive |
| Shutter | Rolling shutter |
| Frame Rate | 5fps @ 16MP (4608 \times 3456) 25fps @ 4MP (2304 \times 1728) 30fps @ 1600 \times 1200 30fps @ 1280 \times 960 |
| Color Depth | 24 bit |



LABOMED, INC.

| | |
|-----------------------|--|
| A/D | 8 bit |
| Exposure Control | Manual/Auto |
| Exposure Time(s) | 0.001-1s |
| White Balance | Manual/Auto |
| Data Interface | USB3.0/5Gb/s |
| Operating system | Windows 2000/XP/ Vista/Win7/Win8/Win10, 32bit & 64bit, Mac/Linux |
| Power Supply | USB3.0 Power Supply, 300~500mA@5V |
| Operating Temperature | 0-60°C |
| Operating Humidity | 45%-85% |
| Storage Temperature | -20-70°C |
| Optical Port | Standard C-mount |

SAMPLE IMAGES

