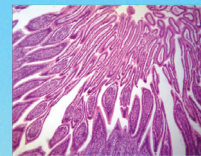




LABOMED, INC.



LC-9 Sony IMX178(C) 1/1.8"(6.22x4.67) C-mount WIFI+HDMI CMOS Camera

LC-9 Sony IMX178(C) 1/1.8"(6.22x4.67) C-mount WIFI+HDMI CMOS Camera has multiple interfaces (HDMI+WIFI+SD card) CMOS cameras and it adopts ultra-high performance Sony CMOS sensor as the image capture device. HDMI+WIFI are used as the data transfer interface to HDMI display or computer.

For HDMI out, The XCamView software will be loaded and a camera control panel and toolbar are displayed on the HDMI screen, in this case, the USB mouse can be used to control the camera, browse and compare the captured image, play back the video.

For WIFI out, unplug the mouse and plug in the USB WIFI adapter, connect the computer WIFI to the camera, then the video stream can be transferred to computer with the advanced software ImageView. With ImageView, you can control the camera, process the image as other USB series camera.



LABOMED, INC.

APPLICATION

LC-9 Sony IMX178(C) 1/1.8" (6.22x4.67) C-mount WIFI+HDMI CMOS Camera can meet various applications and can be widely used in industrial inspection, education and research, materials analysis, precision measurement, medical analyses etc.

The possible application of **LC-9 Sony IMX178(C) 1/1.8" (6.22x4.67) C-mount WIFI+HDMI CMOS Camera** is as follows:

1. Scientific research, education (teaching, demonstration and academic exchanges);
2. Digital laboratory, medical research;
3. Industrial visual (PCB examination, IC quality control);
4. Medical treatment (pathological observation);
5. Food (microbial colony observation and counting);
6. Aerospace, military (high sophisticated weapons).



FEATURES

The **LC-9 Sony IMX178(C) 1/1.8" (6.22x4.67) C-mount WIFI+HDMI CMOS Cameras'** basic characteristic is as follows:

1. All in 1 (HDMI+WIFI) C-mount camera with Sony high sensitivity CMOS sensor;
2. For HDMI application, with built-in multiple-language XCamView software. The camera characteristic can be controlled by XCamView through the USB mouse. The other basic processing and choosing can also be realized by the XCamView.;



LABOMED, INC.

3. 1920 × 1080 (1080P) resolutions to match the current high-definition displayer on the market; Support plug and play application;
4. For HDMI application, 5.04M resolution image(2592*1944) can be captured and saved for browsing; For video, 1080P video stream(asf format) can be captured and saved;
5. With the USB WIFI adapter, the **LC-9 Sony IMX178(C) 1/1.8"(6.22x4.67) C-mount WIFI+HDMI CMOS Camera** can be used as WIFI camera, the ImageView/ImageLite advanced image processing software is used to view the video and capture image, support plug and play application;
6. Ultra-Fine color engine with perfect color reproduction capability(WIFI);
7. With advanced video & image processing application ImageView, which including professional image processing such as 2D measurement, HDR, image stitching, EDF(Extended Depth of Focus), image segmentation & count, image stacking, color composite and denoising(USB).

SPECIFICATION

Model	LC-9
Sensor & Size(mm)	Sony IMX178(Color) 1/1.8"(6.22x4.67)
Pixel(μm)	2.4*2.4
G Sensitivity	425mv with 1/30s
Dark Signal	0.15mv with 1/30s
FPS/Resolution	60/1920*1080(HDMI) 25/1920x1028(WIFI)
Binning	1x1
Exposure	0.03ms~918ms

Interface & Button Functions

USB USB Mouse/USB WIFI Adapter



LABOMED, INC.

HDMI	HDMI Out
DC12V	12V Power in
SD	SD Card Slot
ON/OFF	Power On/off Switch
LED	Power Indicator

Other Specification for HDMI Out

UI Operation	With USB Mouse to Operate on the embedded XCamView
Image Capture	JPEG Format with 5M Resolution (2592*1944) in SD Card(8G)
Video Record	ASF Format 1080P 30fps in SD Card(8G)
Camera Control Panel	Including Exposure, Gain, White Balance, Color Adjustment, Sharpness and Denoising Control
Toolbar	Including Zoom, Mirror, Comparison, Freeze, Cross, Browser Function, Multi-language and XCamView Version Information

Other Specification for WIFI Out

UI Operation	ImageView or ImageLite on Windows/Linux/OSX/ Android Platform
WIFI Performance	802.11n 150Mbps; RF Power 20dBm(Maximum)
Maximum Connected Devices	3~6(According to the Environment and Connection Distance)
White Balance	Auto White Balance
Color Technique	Ultra-Fine™ Color Engine (WIFI)
Capture/Control API	Standard SDK for Windows/Linux/Mac(WIFI)
Recording System	Still Picture or Movie (WIFI)

Software Environment (for USB2.0 Connection)

Operating System	Microsoft® Windows® XP / Vista / 7 / 8 / 8.1/10(32 & 64 bit) OSx(Mac OS X) Linux
------------------	---

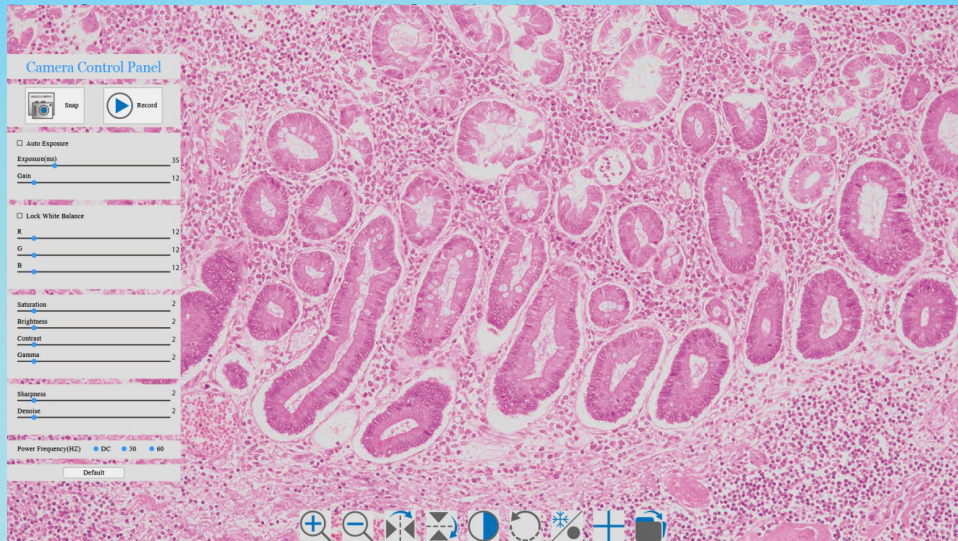


LABOMED, INC.

PC Requirements	CPU:	Equal to Intel Core2 2.8GHz or Higher
	Memory:	4GB or More
	USB Port:	USB2.0 High-speed Port(As Power Only, not as the USB Data Transfer)
	Display:	19" or Larger
	CD-ROM	

Operating Environment

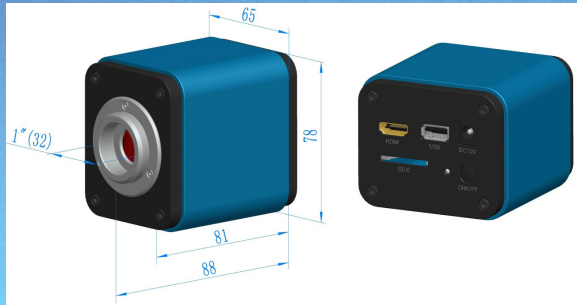
Operating Temperature (in Centidegree)	-10~ 50
Storage Temperature (in Centidegree)	-20~ 60
Operating Humidity	30~80%RH
Storage Humidity	10~60%RH





LABOMED, INC.

DIMENSION



PACKING INFORMATION





LABOMED, INC.

Standard Packing List

- A Gift box : L:25.5cm W:17.0cm H:9.0cm (1pcs, 1.43Kg/ box)
- B LC-9 Camera
- C Power Adapter: Input: AC 100~240V 50Hz/60Hz, Out: DC 12V 1A

American standard: Model: GS12U12-P1I 12W/12V/1A: UL/CUL/BSMI/CB/FCC

EMI Standard:EN55022,EN61204-3, EN61000-3-2,-3, FCC Part 152 class B, BSMI CNS14338

EMS Standard:EN61000-4-2,3,4,5,6,8,11,EN61204-3,Class A Light Industry Standard

European standard:Model:GS12E12-P1I 12W/12V/1A; TUV(GS)/CB/CE/ROHS

EMI Standard:EN55022,EN61204-3, EN61000-3-2,-3, FCC Part 152 class B, BSMI CNS14338

EMS Standard:EN61000-4-2,3,4,5,6,8,11,EN61204-3,Class A Light Industry Standard

- D HDMI Cable
- E USB Mouse
- F High-speed USB2.0 A male to A male gold-plated connectors cable /2.0m
- G CD (Driver & utilities software, Ø12cm)

Optional Accessory

- H Adjustable lens adapter
 - C-Mount to Dia.23.2mm Eyepiece Tube
 - (Please choose 1 of them for your microscope)
- I Fixed lens Adapter
 - C-Mount to Dia.23.2mm Eyepiece Tube
 - (Please choose 1 of them for your microscope)



LABOMED, INC.

Note: For H and I optional items, please specify your camera type(C-mount, microscope camera), engineer will help you to determine the right microscope adapter for your application.

- J 108015(Dia.23.2mm to 30.0mm Ring)/Adapter rings for 30mm eyepiece tube
- K 108016(Dia.23.2mm to 30.5mm Ring)/ Adapter rings for 30.5mm eyepiece tube
- L Calibration kit
 - 106011/TS-M1(X=0.01mm/100Div.);
 - 106012/TS-M2(X,Y=0.01mm/100Div.);
 - 106013/TS-M7(X=0.01mm/100Div., 0.10mm/100Div.)
- M SD Card(4G or 8G)