



## Double Beam Spectrophotometer

# UVD-3200A

8 Automatic Cellholder, Variable Bandwidth 0.5/1/2/4/5nm



## UVD-3200A Double Beam Spectrophotometer 8 Automatic Cellholder, Variable Bandwidth 0.5/1/2/4/5nm

UV-VIS Double Beam Spectrophotometer Scanning System with memory Photometric Range -0.3~3A and 8 Automatic Cellholder.

The UV-Vis with a linear range of 3A. Double Beam Spectrophotometer has a Photometric Range of -0.3~3A.

The **Double Beam Spectrophotometer with Photometric Range -0.3~3A and Spectral Bandwidth 0.5/1/2/4/5** is designed to meet high requirement for precision measurement in the research and production of organic chemistry, biochemistry, medical testing, food testing, environmental protection, water testing industry, etc. The latest ARM system and long optical system ensure high accuracy and good stability of the instrument. They are the best choice of high quality spectrophotometer.

### FEATURES

- 7 inches TFT color screen and windows graphic interface.
- Powerful functions like Photometric measurement, Quantitative measurement, Kinetics, Spectrum scan, DNA\Proteintest, multi-wavelength test, etc
- In-house massive memory is capable of saving up to 1024M for test data & working curves.
- Supports USB storage. The USB port can be used for data transfer, which is easily exported to Excel for further processing, analysis and storage.
- Socket type deuterium and tungsten lamp can make lamps switching without optics debugging and easy to be replaced.
- Large sample chamber can accommodate 5-100mm cuvettes of all kinds.
- Extensive accessories are optional, such as auto 8-cell holder, film holder, peltier/sipper system, 21 CFR compliant software, built-in thermal printer, etc.

### SPECIFICATION

Optical System	Double Beam, Grating 1200 lines/mm
Wavelength Range	190-1100 nm
Spectral Bandwidth	0.5/1/2/4/5nm
Wavelength Accuracy	±0.1nm@656.1nm, ±0.3nm@all
Wavelength Repeatability	≤0.1nm
Photometric Accuracy	0.2%T(0~100%T), ±0.002A(0-0.5A), ±0.004A(0.5-1A)
Photometric Repeatability	≤0.15%T (0-100%T), 0.001A(0-0.5A), 0.002A(0.5-1A)
Photometric Range	0-200%T, -0.3~3A, 0-9999C (0-9999F)
Stray Light	≤0.03%T@220nm, 360nm
Stability	±0.0003A/h @500 nm
Baseline Flatness	±0.001A
Noise	0.0005A@500nm



Work Mode	T, A, C, E
Scanning Speed	Hi, Med, Low (Max. 3000nm/min)
Wavelength Setting	Auto
Display	7" TFT Color Screen
Light Source	Imported Deuterium & Tungsten lamp
Detector	Imported Silicon Photodiode
Cuvette Holder	10mm manual 4-cell holder
Output	USB drive, USB host, RS232
Power	AC 220V/50Hz or AC 110V/60Hz
Shipping Size	880*690*520mm
Gross Weight	45kg
Standard Accessories	10mm glass cuvette x 4, 10mm quartz cuvette x 2, Power cord, User's Manual, PC software

### ACCESSORIES



Single hole film holder



Auto 8-cell holder



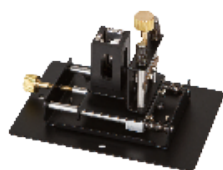
single hole cell holder 10mm



Manual 4-position film holder



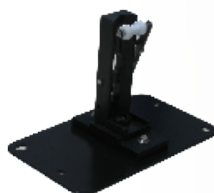
Manual 4-cell holder-100mm



Adjustable XY micro cell holder



Integrating Sphere



Tube rack



Peltier/Spinner system

