



## Double Beam Spectrophotometer

# UVD-3300

Photometric Range -4~4A



## UVD-3300 Double Beam Spectrophotometer Photometric Range -4~4A

UV-VIS Double Beam Spectrophotometer Scanning System with PMT Detector and memory Photometric Range -4~4A

PMT has high sensitivity that can catch the signal from weak light. Hence it is often used in high-end UV-VIS to enable large photometric range. The UV-Vis with a linear range of 4A or above must be equipped with PMT detector. Double Beam PMT Spectrophotometer has a Photometric Range of -4~4A.

The **UVD-3300 Double Beam Spectrophotometer Photometric Range -4~4A** is designed to meet high requirement for precision measurement in the research and production of organic chemistry, biochemistry, medical testing, food testing, environmental protection, water testing industry, etc. The latest ARM system and long optical system ensure high accuracy and good stability of the instrument. They are the best choice of high quality spectrophotometer.

### FEATURES

- The use of photomultiplier tube as a detector offers exceptional sensitivity.
- Powerful functions like Photometric measurement, Quantitative measurement, Kinetics, Spectrum scan, DNA\Protein test, multi-wavelength test, etc.
- In-house massive memory is capable of saving up to 1024M for test data & working curves.
- Supports USB storage. The USB port can be used for data transfer, which is easily exported to Excel for further processing, analysis and storage.
- Socket type deuterium and tungsten lamp can make lamps switching without optics debugging and easy to be replaced.
- Large sample chamber can accommodate 5-100mm cuvettes of all kinds.
- Extensive accessories are optional, such as auto 8-cell holder, film holder, Peltier/Sipper system, 21 CFR compliant software, built-in printer, etc.

### SPECIFICATION

Optical System	Double Beam, Grating 1200 lines/mm
Wavelength Range	190-1100 nm
Spectral Bandwidth	1nm
Wavelength Accuracy	±0.1nm@656.1nm, ±0.3nm@all
Wavelength Repeatability	≤0.1nm
Photometric Accuracy	0.2%T(0~100%T), ±0.002A(0-0.5A), ±0.004A(0.5-1A)
Photometric Repeatability	≤0.15%T (0-100%T), 0.001A(0-0.5A), 0.002A(0.5-1A)
Photometric Range	0-200%T, -4~4A, 0-9999C (0-9999F)
Stray Light	≤0.03%T@220nm, 360nm
Stability	±0.0005A/h@500nm
Baseline Flatness	±0.001A
Noise	0.0005A@500nm
Work mode	T, A, C, E
Scanning speed	Hi, Med, Low (Max. 3000nm/min)

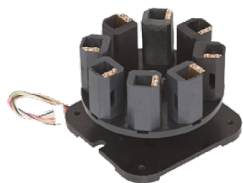


Wavelength setting	Auto
Display	7" TFT Color Screen
Light Source	Imported Deuterium & Tungsten lamp
Detector	Imported PMT
Output	USB drive, USB host, RS232
Power	AC 220V/50Hz or AC 110V/60Hz
Dimension	590 x 475 x 250mm
Net Weight	20kg
Shipping Size	810*660*390mm
Gross Weight	27kg
Standard Accessories	10mm glass cuvette x 4, 10mm quartz cuvette x 2, Power cord, User's Manual, PC Software

## ACCESSORIES



Single hole film holder



Auto 8-cell holder



single hole cell holder-10mm



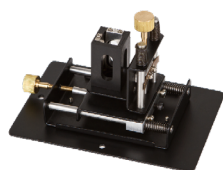
Manual 4-position film holder



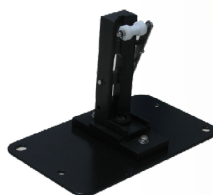
Manual 4-cell holder-100mm



Integrating Sphere



Adjustable XY micro cell holder



Tube rack



Peltier/Sipper system

