



www.labomed.com
spectro@labomed.com

LB-204 Binocular Biological Microscope with Seidentopf Binocular Head, Wide Field Eyepiece, Backward Quadruple Nosepiece, Achromatic Objectives and LED Illumination

Introduction

LB-204 Binocular Biological Microscope with Seidentopf Binocular Head, Wide Field Eyepiece, Backward Quadruple Nosepiece, Achromatic Objectives and LED Illumination is economic, practical and easy to operate. These microscopes adopt LED illumination, which save energy and have long working life, it is also very comfortable for observation. These microscopes are widely used in educational, academic, agricultural and study field. With a microscope adapter, a digital camera (or digital eyepiece) can be plug into the trinocular tube or the eyepiece tube. Built-in rechargeable battery is optional for outdoors operation or places that power supply is not stable.

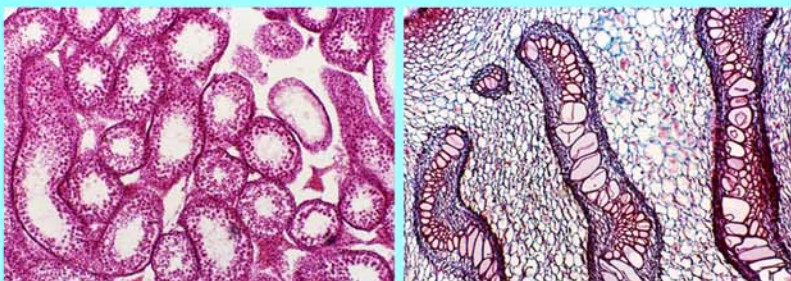
Applications

LB-204 Binocular Biological Microscope with Seidentopf Binocular Head, Wide Field Eyepiece, Backward Quadruple Nosepiece, Achromatic Objectives and LED Illumination are ideally suited for school biological education and medical analyses area to observe all kinds of slides. They can be widely used in clinics, hospitals, schools, academic labs and scientific research department.

Technical Specifications

Viewing Head:	Seidentopf Binocular Head, Inclined at 30°, 360° Rotatable, Interpupillary Distance 48-75mm,
Eyepiece:	WF10×/18, P16×/12 (optional)
Objective:	Achromatic Objective 4×, 10×, 40×, 100×(Oil)
Nosepiece:	Backward Quadruple Nosepiece
Stage:	Double Layer Mechanical Stage 132×142mm/ 75×40mm
Focusing:	Coaxial Coarse & Fine Adjustment, Fine Division 0.002mm, Coarse Stroke 37.7mm per Rotation, Fine Stroke 0.2mm per Rotation, Moving Range 20mm
Condenser:	Abbe NA 1.25 with Iris Diaphragm and Filter
Illumination:	3W LED illumination, Brightness Adjustable, Halogen Lamp 12V/ 20W, Brightness Adjustable (optional), Kohler illumination (optional)
Immersion oil:	5ml Immersion oil
Optional Accessories:	Phase Contrast Kit (optional), Dark Field Attachment (optional) Polarization Attachment (optional), Rechargeable battery (optional)
Dimension & G.W.:	32cm*26cm*44cm, 6kg

Sample Images



Labomed, Inc., 2728 S. La Cienega Blvd. Los Angeles CA 90034 U.S.A.
TEL (310) 202-0811 FAX (310) 202-7286 Email: spectro@labomed.com www.labomed.com