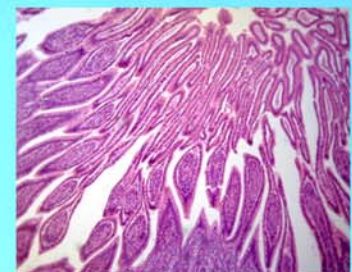




LABOMED, INC.

www.labomed.com
spectro@labomed.com



LB-240 Binocular Biological Microscope with Plan Objectives (Anti-Fungus)

- Built-in transmitted illumination System LED
- Frame should have end opening, Stage Focusing Lock
- Stage height movement coarse and fine Focusing on both sides of frame
- Quadruple nosepiece
- Abbe type with aperture iris diaphragm NA:1.25
- Plan Achromatic objectives (anti-fungus)
- Extra Wide Field Eyepiece EW10x/18 with Diopter Adjustment as Optional
- Comfortable Observation with Eyepoint and Interpupillary Adjustable
- Abbe NA 1.25 Condenser with Iris Diaphragm & Filter
- Handle for easy carrying
- Advanced design of mechanical stage structure prevents the scratches of users.