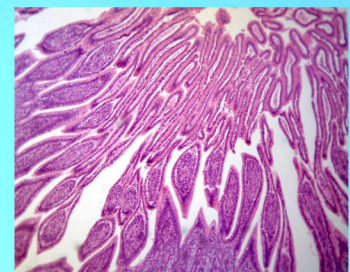
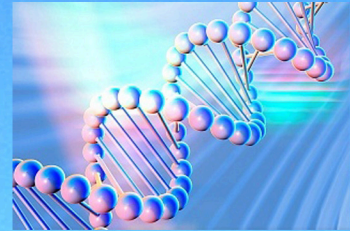




LABOMED, INC.

www.labomed.com
spectro@labomed.com



LB-8 Annular Illuminator

Introduction

With high brightness and even illumination, simple structure and easy to operate, annular LED lamp and fluorescent lamp are used as incident illuminator for stereomicroscopes.

Features

LED: 110V or 220V, 54 or 48 Pieces LED, $\Phi 30$ - $\Phi 60$ mm

Fluorescent Lamp: 110V or 220V, 8W or 10W, $\Phi 30$ - $\Phi 60$ mm